



SpaceLinecard DACH

Protec GmbH
High-Rel Electronic Components

Protec GmbH was founded in 1976 and is successful in the sales of High Reliability components.

We are particularly specialised in highly qualified components for industrial, military and space applications.

In instances of obsolescence and supply problems, we can also offer our customers effective solutions with our extensive product and market knowledge.

Our customer orientated warehouse, equipped with a modern ESD protection system, guarantees reliable component supply.

With our design-in and market orientated expertise, we can provide long term support for your projects and applications.

Through our distributor and rep strategy, we are the "extended arm" of our Manufacturers. When required we will put you directly in touch with our manufacturer's specialists.

Our first priority is a long term, successful partnership with our customers and manufacturers.



Protec GmbH is a specialized distributor of high quality products for the electronics industry, particularly for the Space, Avionic, High Voltage, High Temperature and niche industrial markets.

We support customers and manufacturers with our expertise in:

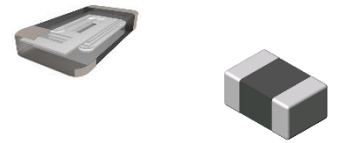
- EUS requirements and licensing processes
- CoC requirements
- Design in support
- Export classifications and rules
- Product trainings

Support and understanding of terms like SLDC, LOT acceptance, PIND, TID, ELDRS, SEE, SEU, SEL, Proton testing and many more industry specific terms.

Responsibilities by Country / Manufacturer	DACH			Nordic									BeNeLux							
	Germany	Austria	Switzerland	Denmark	Sweden	Norway	Finland	France	Italy	Spain	Portugal	UK & Ireland	Belgium	Luxembourg	Netherlands	Czech Republic	Hungary	Poland	Romania	Israel
AEM Inc.	•	•	•	•	•	•	•	•		•	•		•	•	•	•	•	•	•	
AirBorn	•	•	•	•	•	•	•													•
Arquimea	•	•	•	•	•	•	•	•	•	•	•	•	•	•	•	•	•	•	•	
Apogee	•	•	•	•	•	•	•	•	•	•	•	•	•	•	•	•	•	•	•	
Avalanche Techn.	•	•	•	•	•	•	•	•	•	•	•	•	•	•	•	•	•	•	•	
Axtal	•	•	•	•	•	•	•	•					•	•	•	•				
BAE Systems	•	•	•	•	•	•	•				•									
TAS DPC	•	•	•	•	•	•	•	•	•	•	•	•	•	•	•	•	•	•	•	
EPC Space	•	•	•	•	•	•	•	•	•	•	•	•	•	•	•	•	•	•	•	
FLUX	•	•	•		•	•	•	•	•	•	•	•	•	•	•	•	•	•	•	
Honeywell	•	•	•	•	•	•	•	•	•	•	•	•	•	•	•	•	•	•	•	
GSI Technology	•	•	•	•	•	•	•	•	•	•	•	•	•	•	•	•	•	•	•	
NanoXplore	•	•	•	•	•	•	•	•	•	•	•	•	•	•	•	•	•	•	•	•
Macom	•	•	•			•		•		•	•	•		•						
Q-Tech	•	•	•	•	•	•	•		•	•	•	•	•	•	•	•	•	•	•	
Semicoa (OSI location)	•	•	•	•	•	•	•	•	•	•	•	•	•	•	•	•	•	•	•	•
Skyworks DS	•	•	•	•	•	•	•								•	•	•	•	•	
Smiths Canada	•	•	•	•	•	•	•	•	•	•	•	•	•	•	•	•	•	•	•	
SSSI	•	•	•	•	•	•	•	•	•	•	•	•	•	•	•	•	•	•	•	
Teledyne e2v	•	•	•	•	•	•	•	•	•	•	•	•	•	•	•	•	•	•	•	
Teledyne HighRel	•	•	•	•	•	•	•	•	•	•	•	•	•	•	•	•	•	•	•	
VMI / CalRamic	•	•												•	•	•	•	•	•	
VPT Components	•	•	•	•	•	•	•	•	•	•	•	•	•	•	•	•	•	•	•	
VPT	•	•	•																	
ZES	•	•	•	•	•	•	•	•	•	•	•	•	•	•	•	•	•	•	•	•



HighRel Fuses	50 - 180 V	125mA - 20A
HighRel Chip Beads	30 - 1000Ω	200mA - 4A
TWM	RoHs to Tin Lead Conversion	



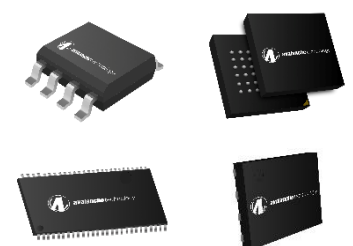
Nano D	Rugged Nano-D metal shell - exceed MIL-DTL-32139	9-91 contacts
Micro D / High Speed	Rugged Micro-D metal shell - exceed MIL-DTL-32139	9-128 contacts
Macro D	Rugged (3A up to 42A per contact)	8-150 contacts
High Speed Rectangular	Rugged - vertical board-mount, right angle board-mount, cable I/O, and flex circuit mounting	40-500 contacts
SInergy	Rugged - modular hybrid solution 1-5 configurable bays	up to 25Gbps
Stackable	high-density, board-to-board stacking	28-200 contacts
Rectangular R&Z Series	PCB Connectors	10-604 contacts
Z-Axis Interposer	high-density, board-to-board or flex circuit stacking	20-175 contacts
Circular	Rugged - micro-miniature circular - similar performance as D38999 connectors more compact & lighter package	up to 10G
Flexible Assemblies	highly reliable, flexible, printed circuit assembly single-sided, double-sided, multi-layer, rigid-flex	
Cable / Harness	copper, RF and more — terminated with any connector	
Active Optical Cables	fully-qualified, Space-Rated Active Optical Cable (SAOC®) & a Rugged Active Optical Cable (RAOC®)	



DPC G1	16bit openMSP430 – Digital Programmable Controller >60krad / SEL >72.2MeV / SEU >40MeV 16 ADCs / 3DAC / 108 IO / PLL / PWM / Low Power 3x 30MIPS / MIL-1553 / CAN / UART / -55 to 125°C	μController
---------------	--	-------------

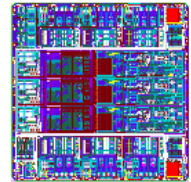
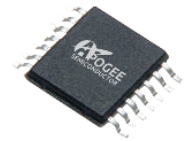



Parallel x32 (Gen 3)	1Gb / 4Gb	75/300krad
Serial D-QSPI (Gen 3)	1Gb / 2Gb / 4Gb / 8Gb	75/300krad
Serial QSPI (Gen 1)	4Mb / 8Mb	75/300krad
Serial (Gen 2)	16Mb	75/300krad
Parallel x16 (Gen 2)	16MB / 32Mb / 64Mb	75/300krad

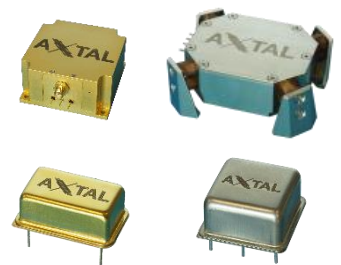




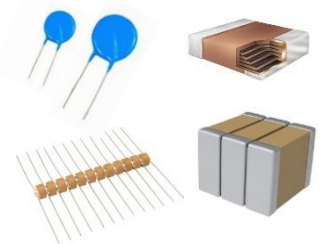
Logic - AND	Quad 2-input / Triple 3-input	30/300kRad/80MeV
Logic - NAND	Quad 2-input / Quad Schmitt 2-input / Triple 3-input	30/300kRad/80MeV
Logic - OR	Quad 2-input	30/300kRad/80MeV
Logic - NOR	Quad 2-input / Triple 3-input	30/300kRad/80MeV
Logic - XOR	Quad 2-input	30/300kRad/80MeV
Logic - Inverter	Hex Inverter / Hex Schmitt Inverter / Hex Open-drain Inverter	30/300kRad/80MeV
Logic - Voter	Dual 3-input Majority Voter with Error Output	30/300kRad/80MeV
Logic – Flip-Flop	Dual D Flip-Flop with Async. Clear	30/300kRad/80MeV



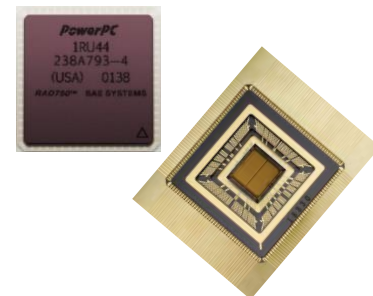
OCXO 	±0,005ppm / Ultra Low Noise	10MHz to 150MHz
TCXO	±0,5ppm	1MHz to 2,5GHz
VCXO	±5ppm / Low Noise	1MHz to 1,5GHz
SAW Oscillator	±350ppm	500MHz to 1,6GHz
Quartz Filter	±1ppm	10MHz to 100MHz
PRECISION CRYSTALS	SC, IT and AT-cut crystals for frequency control, instrumentation , military, space and other markets	Compliant to ESCC3501



High Voltage Disc	3kV to 20kV/ MIL-PRF-49467 Option	X7R / X5R / X5U / Z5U / NPO
High Voltage Multilayer	500V to 10kV / MIL-PRF-49467 Option	X7R / NPO

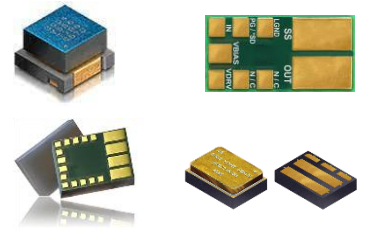


SRAM	4M / 16M / 20M / 64M / 320M	100 / 300krad
PROM	256k	100 / 300krad
C-RAM	2M / 4M	100 / 300krad
Processor	RAD750 Power PC & RAD55xx SoC	100 / 200krad



EPC · SPACE

GaN FETs	40V to 300V	R_{on} 4 to 400mΩ
GaN Driver		
GaN Power Stages		



FLUX

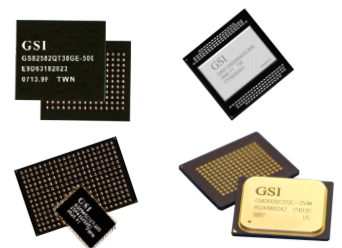


Chokes	ESA Technology Flow Qualified	Custom & Standard
Transformers	ESA Technology Flow Qualified	Custom & Standard
Inductors	ESA Technology Flow Qualified	Custom & Standard



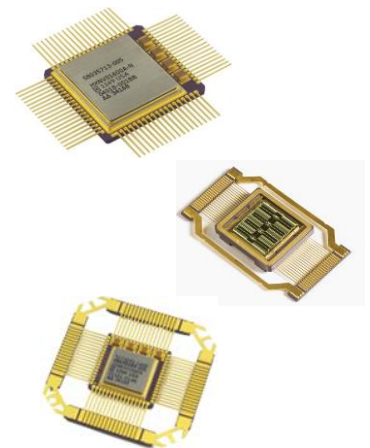
GSI TECHNOLOGY

SRAM also RadTolerant	SigmaQuad-II+ (x18 / x32 configuration) 350 MHz	288M / 144M / 72M
SRAM also RadTolerant	SyncBurst & NBT (x18 / x32 configuration) 333 MHz	144M / 72M / 36M
APU	High Speed Paralell Computing for SAR, Imaging and AI Applications	



Honeywell

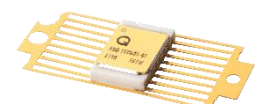
SRAM	QML-Q and V (x8 or x32 configurations)	256k to 64M
MRAM	QML-Q and V (x8 or x16 configuration)	16M / 1M
SER/DES	1-4 Lines or 1-8 Lines	up to 3,125GB/s
RS422	Quad Driver and Reciever	20Mb/s
LVDS	Quad Driver and Reciever	100MHz
Processors	HX1750 & HXRHPPC Microprocessor	
Logic	Quad 2-input NAND	
ADC	12 Bit Monolithic / Low Power	20 MSPS
DAC	12 Bit Monolithic	
Comparator	Common mode 0V to 5V / Input Offset Voltage +/-24mV	
Analog MUX	8-Channel	$R_{ON} < 60\Omega$



ARQUIMEA

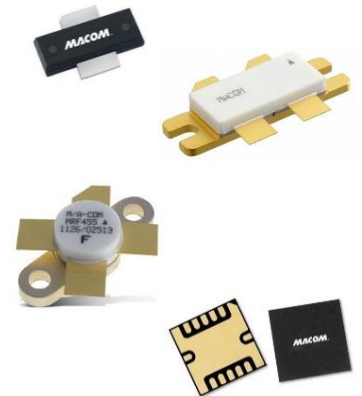


LVDS	EPPL → Quad Driver / Receiver and Dual Transceiver	ESA Qualified
-------------	--	---------------





RF - Amplifiers	Gain Blocks, Low Noise, RF Power, Linear, Transimpedance	
RF - Attenuators	Digital, Fixed, Voltage Variable	
RF - Capacitors	Beam Lead, Binary Chip, Bypass, HighQ, MNS, MNOS	
RF - Couplers	Hybrid, Stripline, Broadband	
RF - Diodes	PIN, Step Recovery, Schottky, Varactor Tuning	
RF - Filters	Band Pass, MoCA, Horizontal & Vertical, Low Pass, Diplex, Triplex Filters	
RF - Frequency Conversions	Down Converter, Up Converter, Multipliers, Mixer, Receivers, Transceivers	
RF - Frequency Generation	Comb, Voltage Controlled	
RF - Limiters	C-Band to V-Band	
RF - Switches	Drivers, DPDT, Limiter, SPST, SPDT to SP8T	
RF - Magnetics	Inductors, Baluns, Transformers	
Optical - Clock and Data Recovery	VCEL Driver, DML Driver with CDR / TIA / EML	
Optical - Receiver Modules	APD Photoreceivers, PIN Photoreceivers, HighSpeed Photodetectors and Receivers	
Optical - Laser	Distributed Feedback Lasers, Fabry-Perot Lasers	2,5G, 10G, 25G
Optical - Modulator Drivers	NRZ, PAM, Coherent	Up to 58Gbps
Optical - Post Amplifiers	Limiting Amplifier	
Optical - Photodiodes	APD Photodiode, PAM4 PIN Photodiodes	10G, 25G, 50G, 100G
Optical - Transimpedance	Client Side, Coherent	
Networking - Crosspointswitch	Crosspoint Switches and Signal Conditioners	
Networking - Equalizers	Linear Equalizers 56 / 112 Gbps	2 and 4 Channel

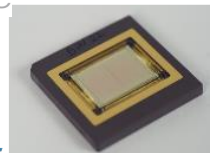


NanoXplore



NG-Medium	SpW & DDR 2 PHY	34KLUT
NG-Ultra	Quadcore ARM R52 @ 600MHz 32 HSSL @ 12.5 Gbps / SpW & DDR 3&4 PHY	500KLUT
NG-Ultra300	16 HSSL @ 12.5 Gbps / SpW & DDR 3&4 PHY Embedded ADCs & DACs	290KLUT

Impulse



STMicroelectronics

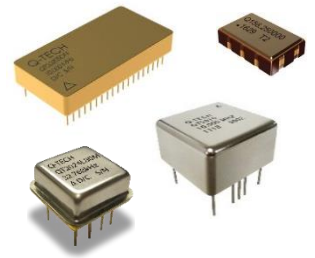
EPSON

Inertial Measurement Unit (IMU)	Low Noise, High Stability, Wide Dynamic Range (New Space)
Vibration sensor	High performance Vibration sensors (New Space)
Accelerometer	High dynamic range, low drift & digital output (New Space)





XO	CMOS, TTL, LVDS, LVPECL	Single & Multiple Outputs
TCXO	HCMOS, Sine	±0,5ppm
VCXO	HCMOS, Sine	
OCXO	CMOS, Sine	±10ppb
SAW	Sine 400MHz to 1,3GHz - low phase noise	300krad
MCXO	CMOS or Sine 5 to 80MHz 1pps	50krad
New Space XO	QT780, QT723 and QT735 Series	50krad
Specialty Oscillators	combined OCXO, MCXO, TCXO, SO, VCXO, PLL & crystal filters in modules	



CNC Machining	Flight Grade Materials 3.4365 (AlZnMgCu1.5) or 3.4345 (AlZnMgCu1.5) FM Coatings and anodizing for EM Units	
----------------------	--	--



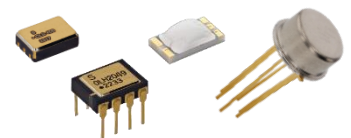
SpaceABLE 28G SL Series	4TRX, 12TX, and 12RX	FM
SpaceABLE 10G SL Series	4TRX, 12TX, and 12RX	FM
SpaceABLE 10G SM Series	4TRX, 12TX, and 12RX	FM
LightABLE 28G LL Series	4TRX, 12TX, and 12RX	EM
LightABLE 10G LL Series	4TRX, 12TX, and 12RX	EM
LightABLE 10G LM Series	4TRX, 12TX, and 12RX	EM



Transistors	2N3810, 2N2920, 2N2857, 2N2369, 2N3637 and more	up to JANSR/F
Diodes	1N5802, 1N5804, 1N5806, 1N5614, 1N5615	JANS & HC / KC die



Optocouplers	Many different types available like (OLS049 or OLS249) Screening per MILPRF19500 or MILPRF38534	
RF Diodes	PIN, Schottky, Varactor, Limiter	up to JANS equiv.
SPDT	SPDT and ST4T	up to 5GHz
RF Amplifiers LNA	Small QFM Packages 2x2mm	up to 6GHz
Other RF parts	Combined LNA with switch in one package, Gain Blocks	

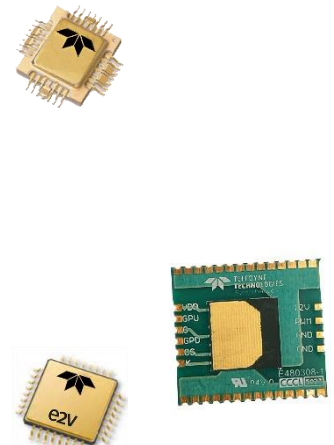




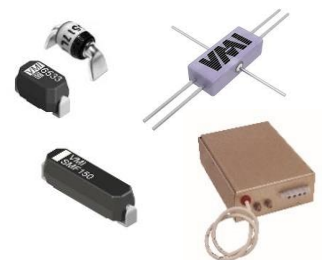
ADC	Base-Band up to Ka-Band	35GHz 12.8GSps
DAC	Base-Band up to Ka-Band	12b 12GSps
DDR4	4GB and 8GB, 100krad >60MeV	Up to ECSS Class 1
Processors	LS1046-Space (ARM A72 @ 1.8GHz) Power PC P2020 and P8548	
SiP Modules	QLS1046 and DDR4 Module	



Amplifiers	LNAs, Driver Apms, Power Apms, Gain Blocks	
SPDT	1MHz to 60GHz	
Radiation Dosimeters	hybrid microcircuit measures (TID)	
DSA	PE94302 - 0.25MHz to 4MHz (6Bits / 64 states)	
Freq. Multiplier	TDFM001000 25GHz MMIC Freq. Doubler	
Limiters	MMIC 10MHz to 6GHz / 100W	Rad Tolerant
Mixers	double-balanced passive mixer MMIC 18-46 GHz	
Prescalers	RF prescaler family divide ratio 2, 4 or 8 / dc to 13.5GHz	
PLLs / Synthesizers /VCO	integer-N and fractional-N	
Power Modules	Load Switch (isolated Driver) 650V – 60A – 25mOhm	46MeV/100krad
POLs 2A to 10A	Vin 4.6-6V / Vout 1-3.6V	



HV Diodes	2 to 20kV / 30 to 3000ns / 10mA to 3.5A / Axial & SMD	QPL available
HV Assemblies	HV Stacks & Bridges	
HV Opto	10kV and 15kV Optodiode & Optocouplers up to 25kV	



Transistors	NPN and PNP Small Single and Power BJTs	up to JANSR/F
Diodes	Zener, TC Zener, Schottky, Ultra Fast, Rectifier	up to JANS
MosFets	RadHard 100V, 150V, 200V, 250V	up to 84MeV





DCDC – SV Series	6W, 15W, 30W, 100W - Single & Dual Output	60krad / >44MeV
DCDC – SVR Series	1.5W, 6W, 15W, 30W, 100W - Single & Dual Output	100krad / 85MeV
DCDC – SVL Series	6W, 15W, 30W, 100W - Single & Dual Output	60krad / 85MeV
POL – SVGA Series	$I_{out} = 8, 10, 15A$ $V_{in} = 4,1 \text{ to } 7V$ $V_{out} = 0.8 \text{ to } 4V$	100krad / 85MeV
POL – SVFA Series	$I_{out} = 10A, 15A$ $V_{in} = 4,1 \text{ to } 7V$ $V_{out} = 0.8 \text{ to } 3,4V$	40krad / 85MeV
POL – SVPL Series	$I_{out} = 6, 9, 12A$ $V_{in} = 3 \text{ to } 5,5V$ $V_{out} = 0.8 \text{ to } 5V$	100krad / 86MeV
GaN Converter	400W $V_{in} = 100V \text{ or } 120V$ Custom Version available	100krad / 85MeV
RF Receiver Power	SLNP17-100CQ, Low-Noise, Quad-Output	100krad



Service Provider	Final Source Inspection or Pre-Cap Inspection	To combine with PO
-------------------------	---	--------------------



ZERO-ERROR SYSTEMS

3A PoL (Point of Load)	$V_{in} 2,5 \text{ to } 5V$ / $V_{out} 0.8 \text{ to } V_{in} -0,5V$	100krad/110MeV
ZES100 (LDAP)	Latchup Detection and Protection / EP Package QFN32L	300krad/110MeV
ZSOM-M01	System on Module (ARM M0+ Module for LEO Missions)	RadTolerant
ZES400 Quad Voter	1,8 to 5V Supply / EP Package QFN28L	300krad/110MeV

General Manager

Christian Mayer

General Manager
E: c.mayer@protec-semi.com

Shlomo Manheim

General Manager & Sales Space
T: +49(0)89/660 292 48
E: s.manheim@protec-semi.com

Nordic

Trygve Stafne

Sales Nordic
T: +47 483 21 558
E: t.stafne@protec-semi.com

UK

Gary Rose

Sales UK south
T: +44(0)7517 929 063
E: g.rose@protec-semi.com

Alan Perry

Sales UK north
T: +44(0)7377 511 302
E: a.perry@protec-semi.com

**BELGIUM
FRANCE
SCHWITZERLAND
SPAIN
PORTUGAL**

Joël Le Mauff

Sales Manager
T: +33(0)6 7581 8215
E: j.lemauff@protec-semi.com

Adrien Frouin

Sales Manager
T: +34(0)640 982 936
E: a.frouin@protec-semi.com

ITALY

Danilo Lauta

Sales Italy
T: +49(0)89/660 292 42
E: d.lauta@protec-semi.com

DACH

Simon Schiller

Sales Avionic & Mil
T: +49(0)89/660 292 42
E: s.schiller@protec-semi.com

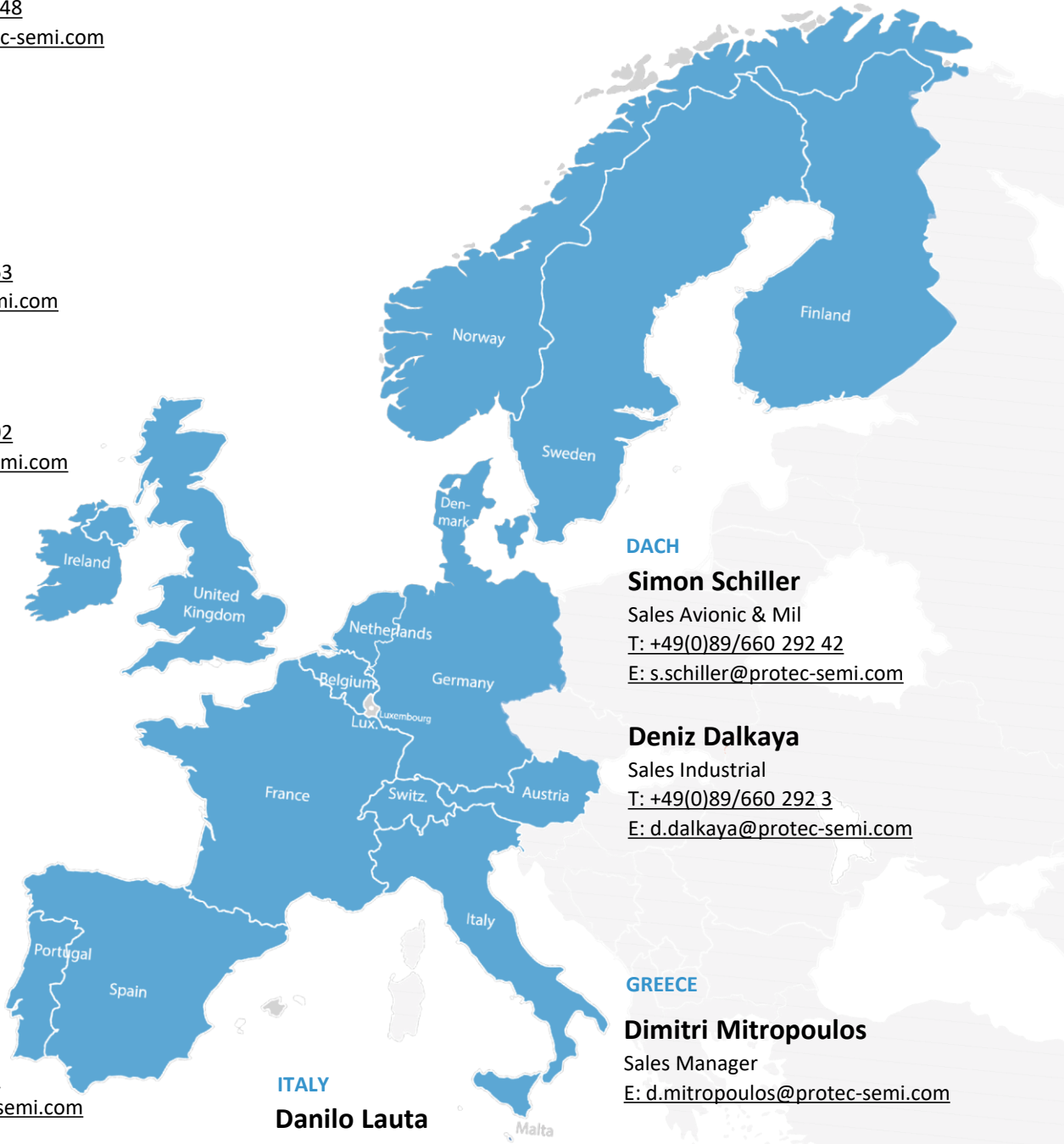
Deniz Dalkaya

Sales Industrial
T: +49(0)89/660 292 3
E: d.dalkaya@protec-semi.com

GREECE

Dimitri Mitropoulos

Sales Manager
E: d.mitropoulos@protec-semi.com



**UK & IRELAND
LINECARD**

available here

WWW.PROTEC-SEMI.COM



**FRANCE, SPAIN &
PORTUGAL AND
BENELUX LINECARD**

available here

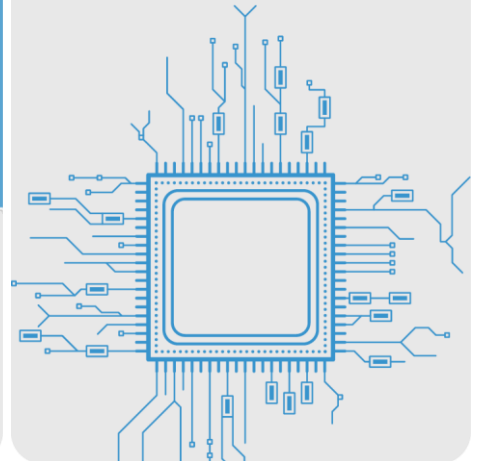
WWW.PROTEC-SEMI.COM



**AVIONIC &
INDUSTRIAL LINECARD**

available here

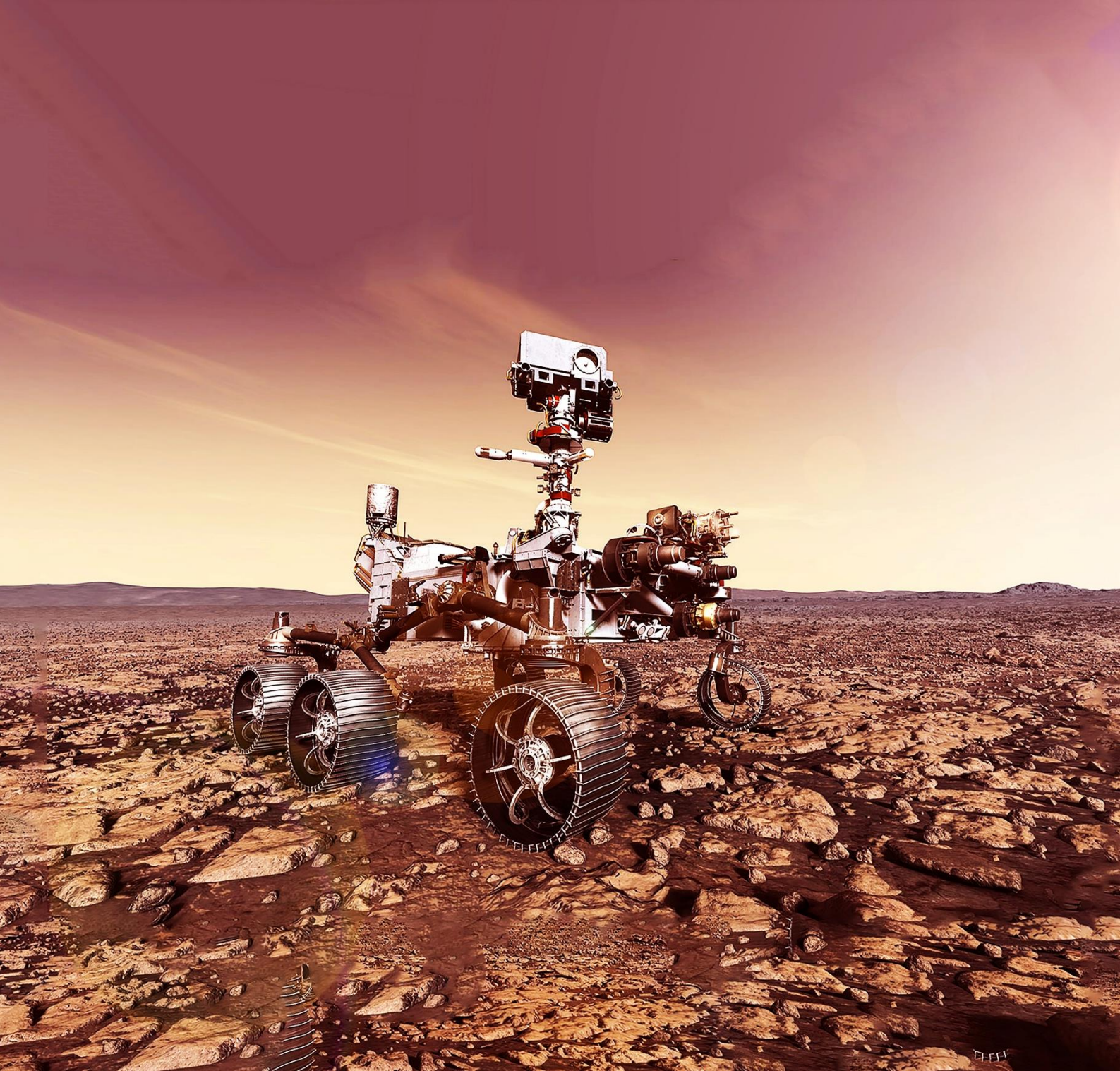
WWW.PROTEC-SEMI.COM



HISTORICAL BRAND NAMES OF SUPPLIERS

following Brands are still known, either sold or renamed, we might be able to help you





Protec GmbH

High-Rel Electronic Components

Protec GmbH

Rosenheimer Landstrasse 117 | 85521 Ottobrunn - Germany

Phone: +49 89 660292-3

E-Mail: sales@protec-semi.com | Web: www.protec-semi.com